

2016 SMS Report

Table of Contents

- 01** Introduction
- 02** Ongoing Initiatives
- 03** Living by Design
- 04** ClimateWise
- 05** AIA 2030 Commitment

Foreword

We are happy to publish the fifth annual report of RB+B's Sustainability Management System. The original SMS document was produced in April of 2011 by RB+B's G:REEN Team with input from the entire office. In our fifth year of implementation, it has been a valuable tool in guiding our office processes as well as the design of our buildings and their environments.

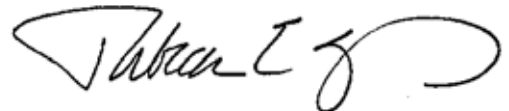
We understand that as humans we affect the quality of all life on our planet. We believe we must think globally and act where we can have the most impact. It is a natural extension of our beliefs and practice to implement the RB+B SMS and participate in the AIA 2030 Commitment.

Our SMS annual report has helped us to document our vision and chart a course for action around each of the three areas of our business: Internal Operations, Internal Process + Technology, and External Product Offerings. We have identified things we are already doing well, as well as areas we will target for growth. With this report, we are able to measure this growth against industry benchmarks, as well as our own. As we move forward, the SMS annual report will help us to tell our story, hold ourselves accountable, and celebrate our positive impact on the world around us. We firmly believe that sustainable design, as we practice it, will positively affect ourselves and the lives of the people who use our buildings.

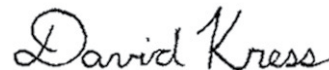
There is a lot of work to be done and we have set some challenging targets. The SMS and this report are important guides to keep us on track to reach them. However, achieving these targets is not the end of the process. It is only a step as we seek to further understand and broaden our role in the world of education and sustainability.



Corky Bradley AIA LEED AP



Rebecca Spears AIA LEED AP



David Kress AIA LEED AP

Introduction

About RB+B Architects

Over the course of our 64-year history, RB+B has designed many public buildings and award winning schools. With a focus on the integrated design process, we strive for sustainability in every building project. RB+B works closely with clients to implement sustainable building practices. We are involved with several LEED projects in Colorado and are committed to the future of sustainable building as a registered member of The AIA 2030 Commitment.

In addition to sustainability in our design products, RB+B is committed to long-term change throughout our business organization. As a member of the City of Fort Collins ClimateWise Program since 2007, our goal is to not only reduce our carbon footprint through energy, transportation, and waste initiatives, but also to educate and challenge our staff to live and work in a sustainable way. The development of the Sustainability Management System (SMS) has helped to move us toward these goals as well as track our progress.

Within the SMS, RB+B has adopted the One Planet Living Framework. This framework is a global initiative developed by BioRegional® which outlines a vision of a sustainable world. As a commitment to this vision we have implemented their One Planet Action Plan. This plan

helps us to embed sustainability in our organization's culture and mission.

One Planet Living Framework

One Planet Living is a vision of a sustainable world where people lead healthy, happy lives within their fair share of the Earth's resources. We are demonstrating our commitment to this vision by implementing this One Planet Action Plan.

Mission Statement

"RB+B incorporates sustainable design practices in every project no matter what size or budget, designing buildings that are responsive to the natural environment while meeting the user's needs. As we believe in being responsible environmental stewards, we are also committed to incorporating sustainable practices into our daily operations."

Our Top Priorities

After a firm-wide workshop and development of our SMS in 2011, we identified five principles we believed would have the greatest impact. In order of priority, those Principles were:

- Zero Carbon
- Health and Happiness
- Zero Waste
- Sustainable Materials
- Culture and Heritage

In organizing our thoughts into the One Planet Living Framework, several cross-cutting intentions emerged that we desired to incorporate into our sustainability initiatives:

- Communication
- Education
- Building Instruction Manual
- Consultant Contracts

These priority principles and cross-cutting intentions were a great starting point for implementing our SMS. The G:REEN|team created a database with each item we hoped to accomplish in 2011. We soon realized that this itemization and tracking system was cumbersome.

Introduction



ONE PLANET ACTION PLAN

We're using a One Planet Action Plan to help us live within a fair share of the earth's resources

Zero carbon	making buildings more energy efficient and delivering all energy with renewable technologies
Zero waste	reducing waste, reusing where possible, and ultimately sending zero waste to landfill
Sustainable transport	encouraging low carbon modes of transport to reduce emissions, reducing the need to travel
Sustainable materials	using sustainable and healthy products, such as those with low embodied energy, sourced locally, made from renewable or waste resources
Local and sustainable food	choosing low impact, local, seasonal and organic diets and reducing food waste
Sustainable water	using water more efficiently in buildings and in the products we buy; tackling local flooding and water course pollution
Land use and wildlife	protecting and restoring existing biodiversity and natural habitats through appropriate land use and integration into the built environment
Culture and heritage	reviving local identity and wisdom; supporting and participating in the arts
Equity and local economy	creating bioregional economies that support fair employment, inclusive communities and international fair trade
Health and happiness	encouraging active, sociable, meaningful lives to promote good health and well being

In 2012 we revised our thought process and developed Concentration Areas. Each year the concentration areas are updated to reflect previous years' accomplishments and goals moving forward.

- Concentration Area #1: Develop firm-wide sustainable design goals and metrics for projects
- Concentration Area #2: Implement sustainable design goals and track/report project data.
- Concentration Area #3: Broadly engage staff in sustainability efforts.

By the end of 2015, we felt as though we had accomplished the objectives of the concentration areas and in 2016 we moved to a system of focus groups.

The focus groups are meant to be dynamic - changing as our firm's sustainability goals develop beyond those in the original SMS - and are as follows:

Living by Design Wellness Committee

- Post Occupancy Evaluation
- Building Envelope
- ClimateWise
- AIA 2030 Commitment

Ongoing Initiatives



Kelly Walsh High School

Ongoing Initiatives

2016 was a great year for continuing to implement our SMS. Our focus groups were able to meet our growing sustainability needs as well as come up with new and innovative ideas.

The following pages provide a detailed look into the ongoing projects in 2016, along with cost and savings information for some projects. We begin with a highlight of accomplishments that correspond to our cross-cutting intentions and move into projects that encompassed every petal of the One Planet Living Framework. We then turn our focus to our focus group summaries.

Communication

Field Trip to Casper

The firm took an office Field Trip to Casper, Wyoming. RB+B's Kelly Walsh High School (KWHS) project weighs in

at over 330,000 gross square feet, over \$100 million in total project costs, and a duration of over seven years! These statistics make this project the largest in size, cost, and duration RB+B has undertaken to date.

In addition to the KWHS project, RB+B has completed several other projects for the Natrona County School District. CY Middle School and Summit Elementary School both opened in 2010, and Journey Elementary School is currently under construction. In addition to RB+B's projects, the District is currently renovating their historic high school (Bassetti Architects out of Seattle, WA) and building a third high school (MOA Architecture out of Denver, CO).

The firm felt it was very important to provide an opportunity for our entire staff to experience these educational buildings firsthand.



Exploring the media center at Kelly Walsh



Learning about Journey Elementary

Ongoing Initiatives

Communication cont'd

Office Tour of High Plains

The office gathered in July to tour Thompson School District's newest facility, High Plains School. The years-long collaborative effort to design and construct a truly unique school led to TSD's first P-8 campus. It's also the district's first sustainably designed school and achieved LEED for Schools Gold. The school opened in the fall with an enrollment of 395 students which is significantly higher than was projected.

NREL Kinard Study

National Renewal Energy Laboratory (NREL), a national laboratory of the U.S. Department of Energy, Office of Energy Efficiency and Renewable Energy, did a study of Kinard Core Knowledge Middle School in an effort to develop the DOE's Advanced Energy Design Guides. "Advanced Energy Design Guides (AEDGs)

are a series of guide books that provide comprehensive, user-friendly, how-to recommendations for high-performance buildings that can be designed and built within typical construction budgets." (<http://energy.gov/eere/buildings/advanced-energy-design-guides>).

Kinard was completed by RB+B in 2006 and has consistently performed in the top 5% of energy efficient schools in the nation. Check out the K-12 design guide featuring Kinard [HERE](#).

CSU Urban Sustainability Presentation

Jayne presented to a CSU Urban Sustainability class about RB+B's internal sustainability practices and design philosophy. She communicated to the students to focus on best practices and use multiple approaches.



High Plains hallway



RB+B internal initiatives

Kinard Core Knowledge Middle School



Ongoing Initiatives



Noosa metal building

Education

Building High Performance Educational Facilities

Ben and Tiffany attended this seminar which focused on educational facilities. From the seminar description:

"K-12 schools are a vital part of the fabric of our society that directly contribute to what our future will be. These are places where future generations learn more than just math and science, they learn about people, life, and develop key life skills. Today's schools are more than just buildings, they are interactive learning environments. They are gathering places. They are safe havens for a community. This presentation will discuss recommendations on how to design and build high performance schools, which provide energy efficiency, safety

and resiliency, as well as reduce life cycle costs. Aesthetics, acoustics, schedule, and fire protection will also be discussed. Case studies will be used to highlight topics discussed."

Metal Building COMcheck

Rebecca and Kate presented to the office how to use COMcheck, a free software provided and maintained by the DOE. COMcheck demonstrates compliance with the model energy and state-specific codes. Their experience with Morning Fresh Dairy and Noosa projects gave them special insight into their presentation, which focused on tips and tricks to entering metal buildings into COMcheck to get the most accurate results.

COMcheck Software Version 4.0.5.3
Envelope Compliance Certificate

Project Information

Energy Code: 90.1 (2013) Standard
 Project Title: Morning Fresh Dairy Milk Plant
 Location: Fort Collins, Colorado
 Climate Zone: 5a (weather data: USA, WY, Cheyenne Muni.AP.72)
 Project Type: Addition
 Vertical Glazing / Wall Area: 3%
 Performance S'n. Specs: EnergyPlus Version 8.1.0.009

Construction Site: 5821 County Road 54 E, Bellvue, CO 80512
 Designer/Agent: Alan Overton, Morning Fresh Dairy, 5821 County Road 54 E, Bellvue, CO 80512, 970-301-0985, alan.overton@noosayogho.com

Building Area	Floor Area
1 Milk Plant (Manufacturing Facility) - Nonresidential	13961

Envelope Assemblies

Assembly	Gross Area or Perimeter	Cavity R-Value
Floor: Atic Roof with Steel Joists, (Bldg. Use 1 - Milk Plant)	12906	38.0
Skylight: Metal Frame Glass, With Curb, Perf. Specs.: Product ID 9006, SHGC 0.34, VT 0.58, (Bldg. Use 1 - Milk Plant) (8)	3	---
Skylight: Metal Frame Glass, With Curb, Perf. Specs.: Product ID 9006, SHGC 0.34, VT 0.58, (Bldg. Use 1 - Milk Plant) (8)	3	---
Skylight: Metal Frame Glass, With Curb, Perf. Specs.: Product ID 9006, SHGC 0.34, VT 0.58, (Bldg. Use 1 - Milk Plant) (8)	3	---
Skylight: Metal Frame Glass, With Curb, Perf. Specs.: Product ID 9006, SHGC 0.34, VT 0.58, (Bldg. Use 1 - Milk Plant) (8)	3	---
Skylight: Metal Frame Glass, With Curb, Perf. Specs.: Product ID 9006, SHGC 0.34, VT 0.58, (Bldg. Use 1 - Milk Plant) (8)	3	---
Floor: Sub-On-Grade Unheated, Vertical 3 ft., (Bldg. Use 1 - Milk Plant) (1)	394	---
NORTH		
Exterior Wall North: Steel Framed, 24" o.c., (Bldg. Use 1 - Milk Plant)	458	25.0
EAST		
Exterior Wall East: Steel Framed, 24" o.c., (Bldg. Use 1 - Milk Plant)	2752	25.0

Project Title: Morning Fresh Dairy Milk Plant
 Data Filename: Z:\1217 Morning Fresh Dairy\1217.6 Milk Plant\F-Design\3 Regulatory Milk P

COMcheck snapshot

Ongoing Initiatives

Education cont'd

WELL Building Webinar

A number of people sat in on the WELL Building Standards Webinar presented by Josh Radoff of YRG Sustainability Consultants. Session Description:

"The WELL Building Standard is an evidence-based standard created through six years of research and development with researchers and physicians from leading medical institutions and expert practitioners from the building industry. Currently in pilot phase, the WELL Building Standard sets performance requirements in seven categories: air, water, nourishment, light, fitness, comfort, and mind.

Now that LEED and The WELL Building Standard are streamlined, what does it take

to become a WELL Accredited Professional? In this one hour live, online webinar, learn from Josh Radoff, a subject matter expert, what the seven core concepts are, certification costs with a real-world example, and who should become a WELL AP and what you need to know to get there."

ASHRAE Conference

Brianne attended the annual ASHRAE Conference in St. Louis, MO. This year's conference discussed the revolution in information technology being applied to the built environment. The attendees were educated in everything from advances in refrigerants, to remote monitoring and diagnostics, to professional skills beyond engineering.

USGBC Green Schools Summit

David, Casey, AJ, and Seth all attended the Green Schools Summit in Denver. The Green Schools Summit is an annual education and networking event hosted by USGBC Colorado. It is Colorado's only conference dedicated to bringing together green building industry professionals, school decision makers, educators, and parents.

A4LE National Conference

Matt attended the A4LE National Conference in Philadelphia. The theme for this conference was Revolutions in Learning and Matt attended the Understanding Energy Use and EPA Smart School Siting Tool sessions.

Ascent Studio



Ongoing Initiatives



St. Vrain School District - Rocky Mountain Elementary remodel



Platte Valley Schools Elementary library

Education cont'd

AIA Colorado Design Conference

Gopal attended the 2016 AIA Design + Practice Conference. The conference consisted of presentations from award winning firms about innovative design strategies, as well as success stories, and lessons to be learned from renowned designers.

Net Zero Seminar

Ben and Brianne went to the 2016 Net Zero Seminar, the largest event dedicated to net zero building design. This year's seminar focused on Energy, Water, and Waste, and was given by Verdical Group. Throughout a series of six short, TED-style presentations by nationally leading AEC firms, they learned about game-changing resources and design strategies.

USGBC Colorado - LEED v4 BD&C Workshop

Tiffany went to this "full-day LEED v4 BD+C Workshop is designed to prepare industry professionals for the change from LEED v2009 to LEED v4. Beginning on November 1st, all incoming LEED projects will need to be registered under the LEED v4. The workshop will focus on the significant changes from the old version to the new version and highlight key information for those who are seeking to pass the LEED AP BD+C exam."

AIA IECC Code Seminar

Brianne went to a seminar regarding updates to the energy code and methods of integrating the intent of the code in building designs.

Ongoing Initiatives



Boulder Jewish Community Center, LEED Gold

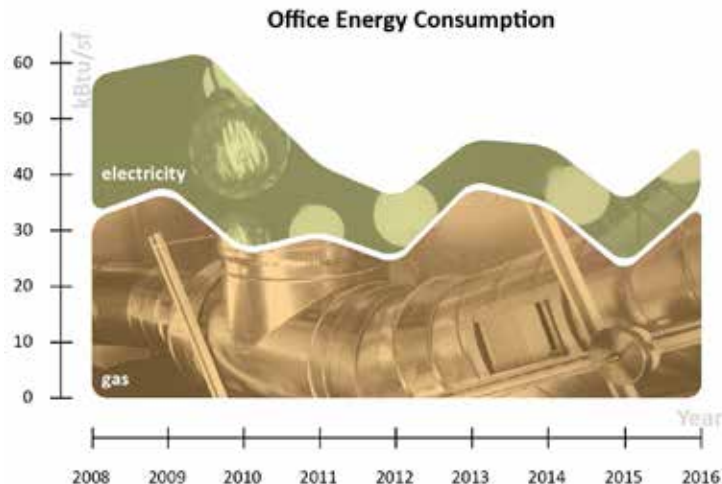


One Planet Living - Zero Carbon

Energy Consumption

We were not able to obtain our energy use records for January through May of 2016 due to a change in ownership of our leased space. For those 5 months, energy use was averaged from 2008-2015 to obtain a figure.

According to these methods, our electrical consumption went down by 1% compared to 2015, but was still 26% higher than our lowest year, 2013. In 2016, we used an estimated total of 19,133 kWh. While electricity consumption during the summer was high than in past year, the consumption was much lower in the winter.



2008-2016 Energy Use

Using the averaged January-May figures and the actual July-December numbers, our natural gas consumption went up from 1,729 therms in 2015 to 1,939 therms in 2016.

We continued our practice of purchasing "Green Energy" through the City of Fort Collins to offset our electrical usage.

Project Cost: \$515.80

Project Savings: \$0

Ongoing Initiatives

Zero Carbon cont'd

Boulder Jewish Community Center - LEED Gold

The Boulder JCC was designed to embody a timeless quality of architecture with the use of local natural materials, simple forms and qualities of solidity, permanence and integrity found in Jewish tradition. Grounded in the past, the design is a positive and contemporary reflection of this culture using universal qualities of design that are evident throughout history such as interior and exterior gathering spaces and abundant natural light that ultimately make this a sustainable building. Aspects contributing to the LEED certification include:

- Transportation. The JCC worked closely with the City of Boulder transportation plan to include reduced paved parking, bike, bus, and pedestrian friendly access.
- Light pollution reduction. Maintains dark skies which benefits bird migration.
- Energy use reduction. This building uses 30% less energy compared to similar buildings and is using 100% green power.
- Regional and Recycled materials. Major construction elements like brick and stone are quarried and manufactured locally or made from recycled materials.
- There is ample daylight and views throughout the building.
- Materials used in the building are not harmful to people.

Boulder Jewish Community Center, LEED Gold



Ongoing Initiatives



Intersect Brewing taphouse



One Planet Living - Zero Waste

Divert to Dirt (2008-Present)

We continued the Divert to Dirt program with great success! Each week Gallegos Sanitation picks up a 65 gallon drum full of our compostable materials including food scraps, napkins and paper towels, and other commercially compostable items.

Project Cost: \$1,080

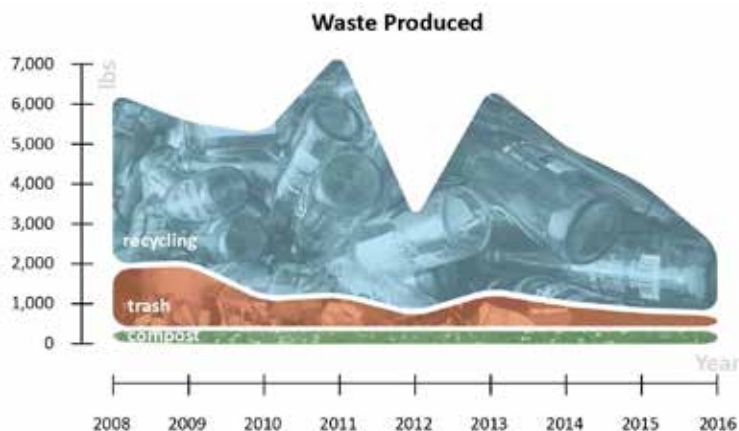
Recycling Teams (2010-Present)

In 2015 recycling teams changed as project teams moved desks and the number of staff fluctuated. This created the perfect opportunity to remind staff about the benefits of participation and guidelines for Single-stream Recycling.

Project Cost: <1 hour/week per team

Landfilled Waste

In 2016, we reduced our landfill waste to only 266 pounds! This figure is the lowest amount of landfill waste produced since we began tracking in 2008. Our recycling waste was also one of the lowest amounts recorded at only 2,562 lbs. These low figures might be attributed to projects going to a paperless (digital) format and the higher workload which led to less cleaning of storage areas.



2008-2016 Waste Collection

Ongoing Initiatives



Bike to Work Day crew



RB+B's new bike rack

One Planet Living - Sustainable Transportation

Bike Friendly Business

In 2015 RB+B earned the Silver Bicycle Friendly Business (BFB) designation from the League of American Bicyclists.

Attributes of a BFB (From the League of American Bicyclists):

- Encouragement
- Engineering
- Education
- Evaluation & Planning

New Bike Rack!

In 2016, and after much deliberation about the look and location, RB+B installed our first bike rack to further encourage employees to utilize sustainable transportation.

ROAD Challenge (2010-present)

In 2016 we had 100% participation in our Reducing Our Automobile Dependency Challenge, meaning that 20/20 employees used alternative transportation to commute to work at least once during the year.

We saved 157 gallons of gas by using alternative transportation to commute to work. This is about 100 gallons more than in 2015, but still below average.

In 2016, we tracked our alternative transportation days with a new poster in the office.

Project Cost: 3 hours tracking

Project Savings: \$345 personal savings, \$0 savings to the office

Ongoing Initiatives

Sustainable Transportation Cont'd

As far as alternative transportation for business goes, we began a new calculation method which better reports the amount saved by carpooling. In 2016, we saved 970 gallons of gasoline. This ranks among our highest saving, but it less than 2015. This translates to 20,931 miles worth of savings that could have been reimbursed to the employees.



2008-2016 Sustainable Transportation

Project Cost: 3 hours tracking

Project Savings: \$2,134 personal savings,
Over \$11,500 office savings

ATmo (2011-present)

In 2016, we had 100% participation in Alternative Transportation month (ATmo)! Our goal for the month was to reduce our carbon emissions by 1 ton. We gave it our best and were only lbs short!

Project Cost: 2 hours,
\$50 gift certificate

Project Savings:
~\$200 personal savings, \$0 savings to the office

GoTo Meetings and Skype

We continued to use GoTo Meeting as the standard when scheduling meetings, but also added Skype to the mix. Using GoTo Meeting and Skype allows us to host meetings that may have otherwise required a lot of travel. Miles saved by using these programs are not accounted for in the chart.

Mosley PK-8, Joint Venture with Hord, Coplan and Macht



Ongoing Initiatives



Recycled conference tables



One Planet Living - Sustainable Materials

Green Cleaning (2008-present)

We continue our green cleaning products purchasing policy to improve indoor air quality in the office.

Project Cost: \$100/year

Salvage and Reuse

Emerald Elementary in Broomfield, CO has managed to salvage an existing wrought-iron fence (which was really fancy for a school and required some community engagement to get in the first place) as well as playground equipment to be reused in the new building.



Intersect upcycling

Recycled Conference Tables

Matt hauled a pile of recycled gym floor from the old Kelly Walsh High School back to the office and David and Gopal designed and constructed new conference tables for the office!

Repurposed Pallet Wood

Intersect Brewing in Fort Collins, CO is using old pallet wood as a wall and front-of-bar decorations. Nice Upcycling!



Emerald gate

Ongoing Initiatives

Sustainable Materials cont'd

Repurposed Gym Floor

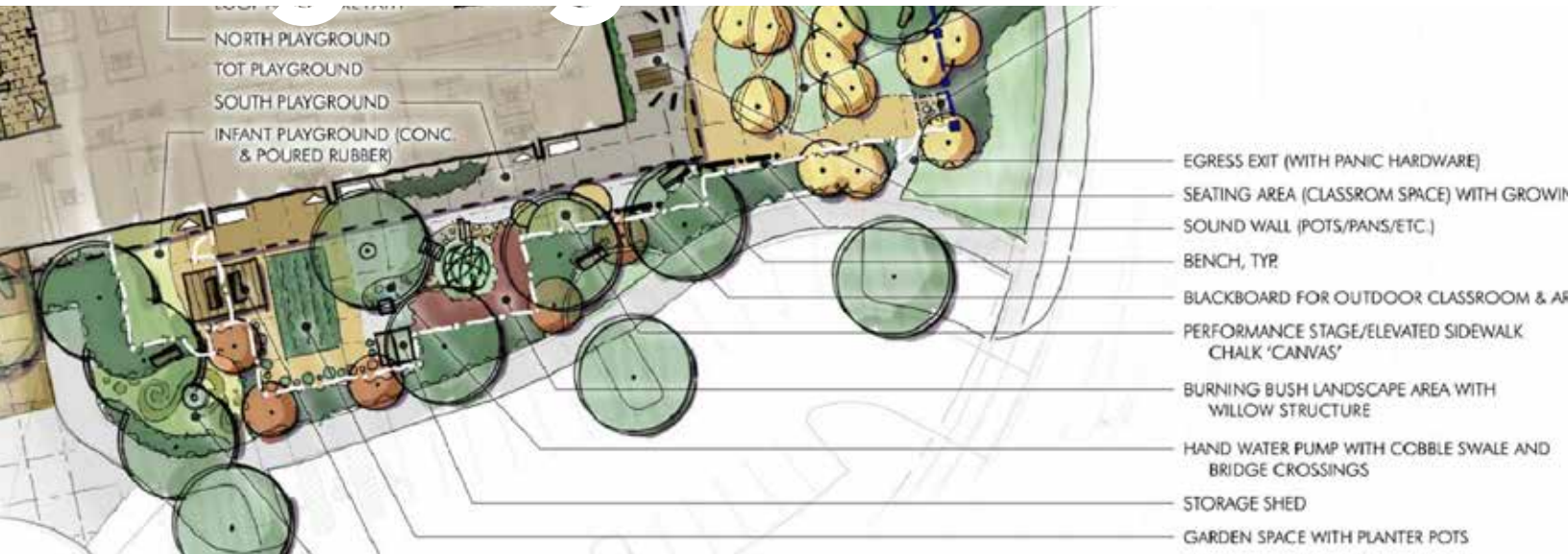
Gym flooring from the old Kelly Walsh High School in Casper, WY was also re-used at the replacement school - providing cover for the commons gathering space in the heart of the school. The biggest challenge was keeping the basketball key in tact!



Kelly Walsh commons



Ongoing Initiatives



JCC edible landscaping



One Planet Living - Local/Sustainable Food

Edible Landscaping

The Boulder Jewish Community Center will be including edible landscaping in their site design with raspberry, currant, and gooseberry bushes replacing some of the deciduous shrubs around the ECC. New fruit trees will be planted in the playground area and in the site landscaping plus existing apple trees will be retained on a remote part of the site. There are also plans for raised beds for gardening in the ECC and community garden in the landscape buffer south of the new road we'll be building.

Lunch Presentations & Break

Whenever possible, we purchase food from locally owned businesses for lunch presentations and office meetings. Some of our favorites include the Food Co-op, Backcountry Deli, and Silver Grill.

Ongoing Initiatives



Steel panels at Boulder JCC



One Planet Living - Culture & Heritage

Cultural Elements

The corten steel panels at the north entrance have a pattern that's reminiscent of fruits and seeds, significant to Jewish holidays.

Ongoing Initiatives



Halloweenfest at Intersect Brewing



One Planet Living - Health and Happiness

Personal Volunteering (2012-present)

We wish to encourage active participation in volunteer activities directly related to enriching the quality of life and opportunities for the communities in which we live and work. In 2016, employees reported 362 hours of volunteering for their favorite organizations:

- Denise: Front Range Community College
- Lacey: Goddard School
- Derek: Traut ES Loveland and Centennial Park clean-up
- AJ: Loveland Park clean-up
- Seth: Mission Starfish in Haiti and Loveland River Cleaning
- Tiffany: AIA Colorado North, HeRD of Wyoming, Larimer Humane Society, and Boulder HS
- Josh: The Crossing Church
- Rebecca: Larimer County Parks

and Open Space, CSU ACT film festival, Engle Family Foundation, and Intersect Brewing Halloweenfest

- Brianne: Thompson School District and RB+B Green Team
- Jayne: Living by Design, RB+B Green Team, FoCo Roller Derby, and Society for Design Administration

Office-Wide Volunteering Efforts

In May, a group of RBBers participated in the Loveland Spring Waterway Cleanup. We put on our gloves and brought tools to help pick up debris leftover from the 2013 flood of the Big Thompson River.

In September, we participated and took first place in Partners Mentoring Youth's annual SuperStars Sports Challenge to raise money for their organization - The office matched the total raised by employees for a lump sum donation of over \$2,000!

Ongoing Initiatives

Health and Happiness Cont'd

Office-Wide Volunteering Efforts cont'd

For the third year in a row, we adopted a family through Poudre School District for Christmas. The mother and her five children were very happy!

RB+B also donates to and sponsors many local events and non-profit organizations.

RB+B H2O (Happy Hour Outing)

A monthly happy hour to enjoy a brew (or two) with coworkers.

Project Share (2012-present)

Project share helps generate a more inclusive and informed environment in our office culture and allows for creative input from staff on current projects. Project shares are each month during break.

Other Parties

Other happiness boosters included our Summer Picnic at Boyd Lake, our Holiday Potluck, and our Holiday Party at the Moot House.

Holiday Potluck



Living by Design

2016

FITNESS CHALLENGE!

RB+B Living by Design Wellness Committee

The Wellness Committee, formed in 2014, improves office wellness through a number of initiatives.

2016 Fitness Challenge

After the success of the 2015 Biggest Loser Challenge and the September Active Days Challenge, the wellness committee devised a plan to motivate employees even more!

The first annual Fitness Challenge features four sessions lasting 12 weeks each, events, and incentives for participation.

Participants can earn 1-3 points per week depending on how many minutes of moderate or vigorous activity they have each week (90-225+ minutes). At the end of each session incentives are distributed to those that earn 12-24+ points!

The challenge also features events that participants can cross-train for and have additional incentives. In 2016, the events were snowshoeing, the Loveland McKee Classic Bike tour, mountain biking, and the Jingle Bell 5k.

Healthy Foods Potluck

In August, the wellness committee hosted a healthy foods potluck with information about what is and isn't included in a health lunch and extra kudos for those that went above and beyond to include items such as:

- Choosing non-GMO
- Unsweetened or lower glycemic
- Low salt
- Organic, whole fat dairy
- Natural ingredients
- Grew it yourself or locally grown



Mountain biking at Horsetooth



RB+B Jingle Ballers

ClimateWise

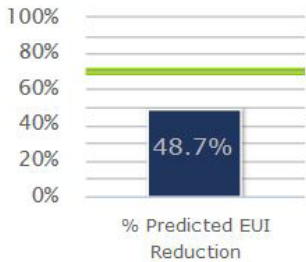


RB+B joined Climate Wise in 2007 and worked our way up the ranks to be recognized as a Platinum Partner in 2011 at the annual EnvirOvation event.

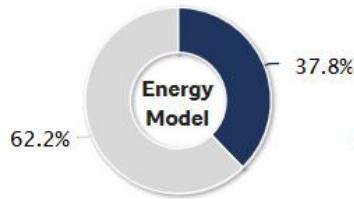
In 2015, ClimateWise2.0 was introduced. 2.0 works on a badge system for Partners to recognize achievements in energy, waste, water, transportation and social responsibility.

RB+B has maintained our Platinum Partner status by earning 4 out of the 5 badges. Next year we'll strive to earn points toward the water badge!

AIA 2030 Commitment



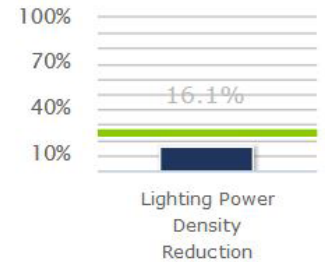
% Predicted EUI Reduction
from Average EUI



Energy Model
% GSF of Projects



Will Actual EUI Data Be Collected
% GSF of Projects



Lighting Power Density Reduction
% of Projects

GSF Values

Total =	517,508
Meeting Target =	400
% Meeting Target =	0.1 %

195,470

195,070

Total =	31,069
Meeting Target =	14,868
% Meeting Target =	47.9 %

Interior-Only Projects: 6 projects and 31,069 GSF included in analysis.
Non-Residential and Residential Projects: 15 projects and 517,508 GSF included in analysis.

2016 report

"In 2006, Architecture 2030 issued the 2030 Challenge, a breakthrough vision that calls for all new buildings, developments, and major renovations to be carbon-neutral by 2030. To support this call to action, we created the AIA 2030 Commitment—a national framework with simple metrics and a standardized reporting format—to provide a structure for tracking progress and help you meet the challenge." [AIA 2030 Commitment](#)

RB+B signed on in January of 2010 and submitted our first report in March of 2012.

Whole Building/Addition Projects (projects with HVAC upgrades)

Predicted Energy Use Intensity (PEUI) is kBtu/sf/year. This is the unit used for analyzing the predicted energy use in building. The reduction figures are relative to either the National Average based on location and building type, the PEUI determined by the design code, or the modeled PEUI.

Since joining in 2010, RB+B has reported:

Year	Number of Projects	Gross Square Feet	PEUI Reduction
2011	15	550,021	36.8%
2012	12	944,139	33.3%
2013	8	688,802	9.3%
2014	19	1,109,752	20%
2015	22	756,361	43.1%
2016	15	517,508	48.7%

Projects with Highest PEUI Reduction:

- 2011 - Windsor Readiness Center 75.9%
- 2012 - PSD Elementary Renovations 40%
- 2013 - Prairie Heights Middle School 66.7%
- 2014 - Prairie Heights Middle School 66.7%
- 2015 - Oak Street Restroom Building 100%
- 2016 - Oak Street Restroom Building 100%

AIA 2030 Commitment

Interior Only Projects (projects with lighting upgrades only)

Lighting Power Density (LPD) is the installed lighting watts/square foot. The reduction percentage is relative to either the National Average based on location and building type, the LPD determined by the design code, or the modeled LPD.

Since joining in 2010, RB+B has reported:

Year	Number of Projects	Gross Square Feet	LPD Reduction
2011	8	127,749	20.7%
2012	7	111,065	25.6%
2013	1	4,200	13.3%
2014	1	4,200	13.3%
2015	2	55,621	7.8%
2016	6	31,069	16.1%

Code-Driven Metrics

While many projects are not meeting the 70% PEUI reduction for whole building projects, many projects that are interior only have met or exceed the reduction goals. The design code for interior only projects has been a significant driver in meeting the 25% LPD reduction goals in 2016. It will be essential for the firm to continue to exceed code requirements for whole buildings in order to obtain the 2030 goal of 70% PEUI reduction going forward.

Projects with Highest LDP Reduction

- 2011 - Fairmont School 27.2%
- 2012 - Burlington Elementary School 30.8%
- 2013 - Equinox Brewing Remodel 13.3%
- 2014 - Equinox Brewing Remodel 13.3%
- 2015 - Fort Collins Readiness Center 45%
- 2016 - Fort Collins Country Club Remodel 33%

Fort Collins Country Club rendering



Closing

In developing our Sustainability Management System, we first divided our organization into three areas: Internal Operations, Internal Process + Technology, and External Product Offerings. To date, our SMS has largely been focused on tracking and reporting efforts in the Internal Operations area, demonstrating that we “practice what we preach.” This has also been driven largely by our office culture and participation in the ClimateWise program.

We've also focused on new initiatives in the Internal Process + Technology area while maintaining current initiatives in the Internal Operations area. While we are proud to “practice what we preach,” we know that there is even greater potential to positively impact the environment through our design work for our clients.

In signing the AIA's 2030 Commitment, we have agreed to track and report progress in this area. New initiatives in 2017 will be focused on improving design to meet the challenge as well as more deliberate communication with all of our clients regarding the environmental impacts of their projects and the opportunities to reduce those impacts.

We will continue to engage our staff in our sustainability efforts and implement even more formal sustainability initiatives into the firm's workflow.

We are proud of the work we have done incorporating sustainable materials and strategies into our design work over the last decade and look forward to improving tracking and reporting methodologies to better document our progress and further refine our approaches.